



# 16-Port Fast Ethernet Switch



FEU-1610

H/W Version: 1

## Product Overview

The LevelOne FEU-1610 is a 10/100Mbps NWay Unmanaged Switch with outstanding performance and high efficiency. With 16 NWay auto-negotiation ports, this switch fulfills the needs of connecting users on a network with automatic selection of best network speed and duplex mode.

## Power Saving Features

The FEU-1610 supports Green Ethernet and is compliant with IEEE 802.3az Energy Efficient Ethernet to provide power-saving benefits without compromising performance. One way is to automatically detecting the length of connected cables and to adjust power usage by saving energy on shorter cable connections.

## Traffic Prioritization (Quality of Service)

The FEU-1610 supports IEEE802.1p priority queuing Quality of Service which provide considerably enhance download quality. User can reserve bandwidth for important functions that require a large bandwidth or have a high priority, such as VoIP, web browsing application or video conferencing.

## Easy to Use

The FEU-1610 is plug-and-play and supports all kind of network protocols to make installation and network management easy and fast. LED indicators provide a quick and easy way to read port and switch information.



1. LED Indicators
2. 10/100Mbps RJ-45 Ports



3. Power Socket
4. Wall-Mountable



- 4
- 4

## Key Features

- 16 x 10/100Mbps RJ-45 NWay Ports
- Supports NWay protocol for speed (10/100Mbps) and duplex mode (full/half) detection
- Supports MDI/MDI-X auto crossover and support full/half duplex operation on all ports
- Supports back-pressure (half duplex) and flow control (IEEE 802.3x)
- Wire-speed packet filtering and forwarding rate
- Store-and-forward architecture filters fragment and CRC error packets
- Provides LED indicators for network diagnostics
- Metal casing with internal power supply
- Supports IEEE802.1p priority queuing Quality of Service
- Supports IEEE 802.3az Energy Efficient Ethernet

## Works Well With



**FNC-0107TX**  
Fast Ethernet PCI Card with Wake-On LAN function



**USB-0301**  
USB Fast Ethernet Adapter

## Technical Specifications

### Standard

IEEE802.3 (10BASE-T)  
 IEEE802.3u (100BASE-T)  
 IEEE802.3x Flow Control  
 IEEE802.3az Energy Efficient Ethernet  
 IEEE802.1p QoS

### Interface

16 x 10/100Mbps NWay RJ45 ports

### NWay Protocol Support

Network speed: 10/100Mbps  
 Duplex mode: Full and Half

### MAC Address Table

8K

### Buffer Memory

256KB

### Filtering/Forwarding Rate

10Mbps: 14,880pps/14,880pps  
 100Mbps: 148,800pps/148,800pps

### LED indicators

System: Power

Port: Link/Act

### Power Supply

Internal power 100~240V AC, 50~60 Hz

### Operating Temperature

0°C ~ 40°C (32°F ~ 104°F)

### Operating Humidity

10% ~ 90% (non-condensing)

### Dimensions (L x W x H)

267mm x 161mm x 42mm

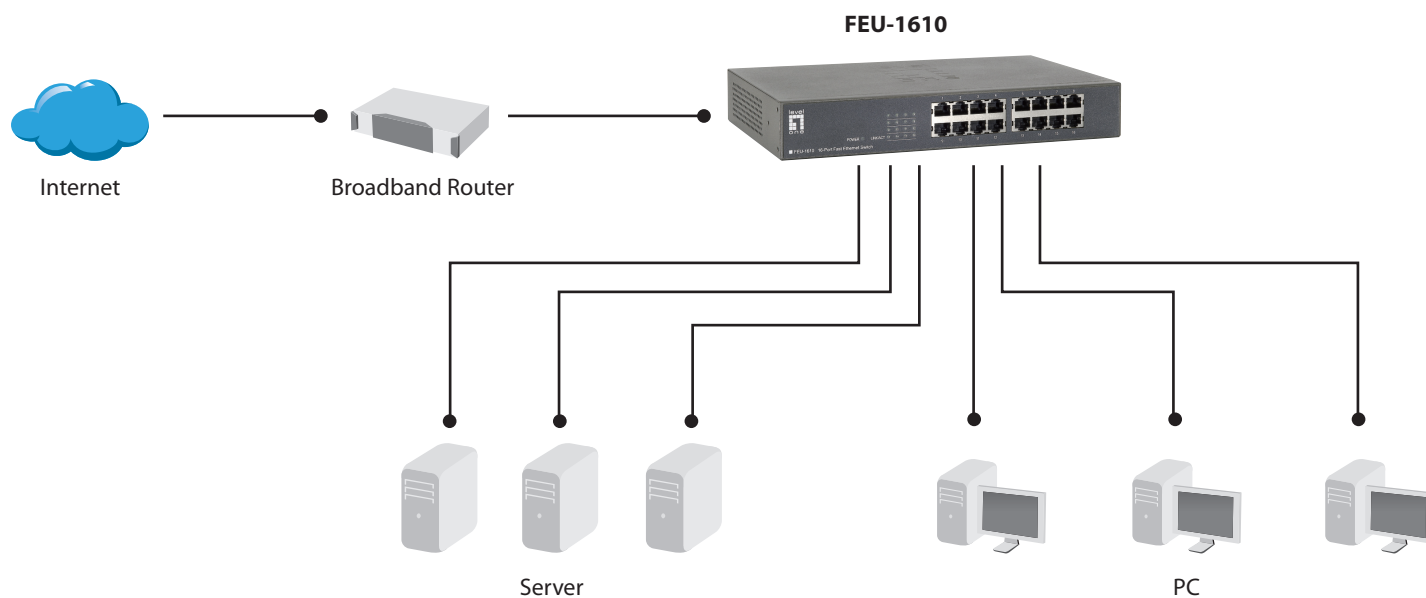
### Case Material

Metal

### Emission

FCC/CE/VCCI Class B

## Product Diagram



## Order Information

### Package Contents

#### FEU-1610: 16-Port Fast Ethernet Switch

FEU-1610

Power Cord

Rubber Feet x 4

QIG Manual

19" Rack Mount Bracket x 2

Wall Mount Kits