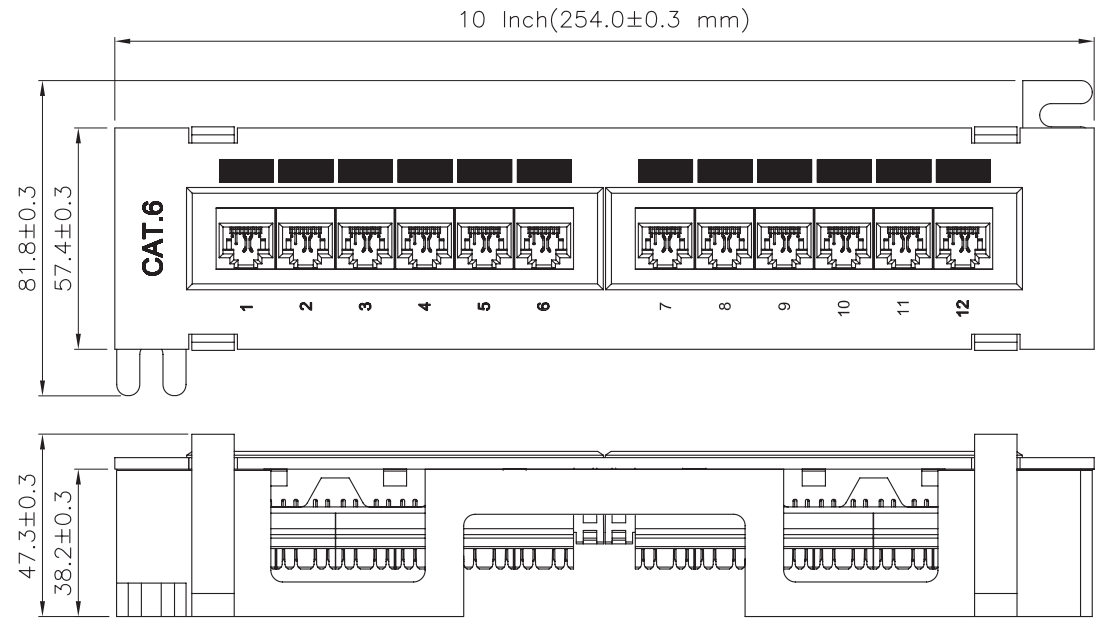
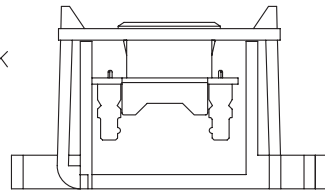


SCALE 1/4



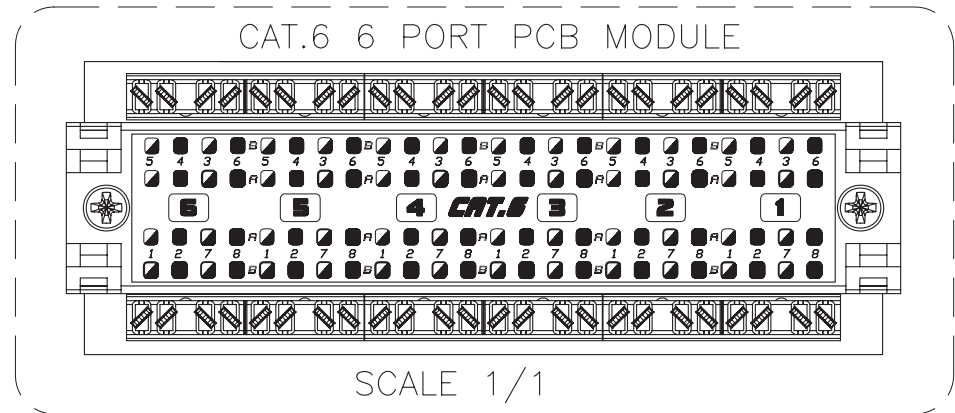
Specifications :

Material :

1. Panel : Aluminum, 3.0 mm thickness with Black(RAL9005) color painted.
2. RJ45 Jack :
  - 2-1. Housing : ABS, UL 94V-0.
  - 2-2. Contact Bracket : PC, UL 94V-2, Transparent color.
3. RJ45 Jack Contact :
  - 3-1. Material : Phosphor Bronze with Nickel plated.
  - 3-2. Finish : 50 micro-inch Gold plated on Plug contact area.
4. IDC :
  - 4-1. Housing : PC+Glass Fiber, UL 94V-2.
  - 4-2. Terminal : Phosphor Bronze with Tin plated.
5. Jack Bracket Set : ABS, UL 94V-0.
6. Panel Bracket : ABS, UL 94V-0.
7. PCB : FR4, UL 94V-0.

Performance :

- a. T568A & T568B wiring.
- b. Insertion force : 20N max. (IEC 60603-7-4)
- c. Retention strength : 7.7 kg between Jack and Plug.
- d. Operating temperature : -10°C to 60°C. (ISO/IEC 11801, ANSI/TIA/EIA 568 B.2)
- e. Life(mating cycles) :
  - \*Jack : 750 cycles min. (ISO/IEC 11081, IEC 60603-7-4)
  - \*IDC : Suitable for 22-26 AWG stranded and solid wire, compatible with both 110 & Krone punch down tools.
- f. The Cat.6 transmission performance is in compliance with the ANSI/TIA/EIA 568 B.2-1 standard.



GENERAL TOLERANCE OF DIMENSIONS X.XXX ±0.005 X.XX ±0.05 X.X ±0.1	DRAWING	03.JUN.2010	MARK	
	CHECK	03.JUN.2010	JANE	
	APPROVAL	03.JUN.2010	JAIMY	
	DATE	NAME	ITEM NO.: CP-3014-12P-C6M	
SCALE	1/2 (A4)	UNIT	mm	DES.: CAT.6 UNSHIELDED PATCH PANEL
	DRAWING NO.	CP-3014-12P-C6M(SA3)		
	DRAWING CLASSIFICATION	S	SHEET 1 OF 1	