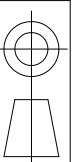


SPECIFICATION

1. Connector A
ST/PC MM
2. Connector B
SC/PC MM
3. Cable Type
Duplex ϕ 3.0mm 50/125um XM
4. Length
Gray
5. Jacket Color
<0.5 dB
6. Insertion Loss
Individual Bag
7. Package

OPERATION :

- Fiber Extension : $-0.05\mu\text{m} < H < +0.05\mu\text{m}$
- Ferrule End-face Radius : $10 < R < 30\text{mm}$
- Apex Offset : $< 50\mu\text{m}$
- Increase in insertion loss after 500 mating : 0.2 dB Max.
- Operation Temperature : -20° to $+70^\circ$
- Storage Temperature : -40° to $+80^\circ$
- Humidity (non-condensing) 95%RH



DSGN JOHNSON 19.MAY.2003 ITEM NO:

CP-STSC-50/125

UNIT M / M

CHK

Duplex ϕ 3.0mm 50/125um

SCALE

APPR

DWG NO: CP-STSC-50-125

CP Technologies